

## TIPA Rosette

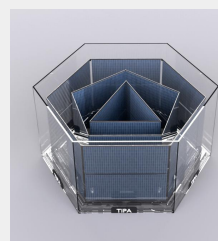
TIPA Rosette has multiple solar cells installed concentrically inside the original polygonal or circular shape. The installed capacity is higher and the overall voltage and current is much higher depending upon the number of concentric TIPA solar cells.

### TIPA Rosette 152W

Body: Clear  
Dome: Clear



Dimensions (mm)		Area (mSq)	Weight (kg)
Height	Width		
418	470	0.14	2.2



15 × M12 cells with  
each cell at 10.1Wp



#### Material of Construction :

Dome and Body – Polycarbonate PC  
Bottom Cap – Polycarbonate PC  
Internal Mirror – Reflective PVC



#### Operating Temperature :

-52°C to 100°C



#### Operating Pressure :

0.7 Atm with internal Inert Argon



#### Power Output :

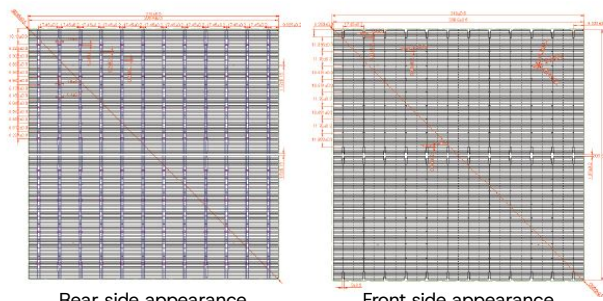
152 Wp

## Solar Cell Configuration and Specification

M12 Small Cut Mono Cells

Dimensions : 210mm x 35mm

Configuration : 6 Series x 15 Parallel (69 cut Cells)



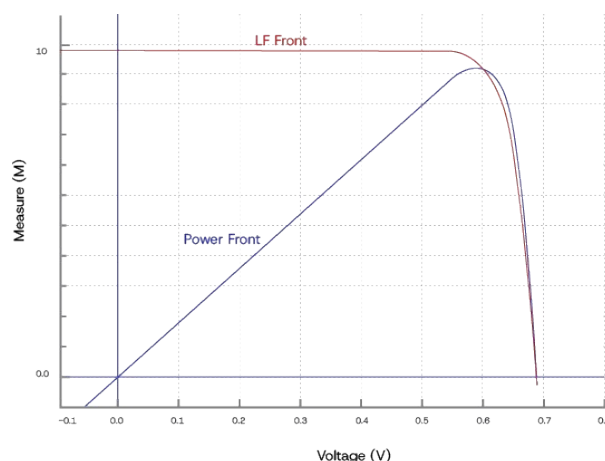
Rear side appearance

Front side appearance

## Electrical Parameters

Parameters	Value	Units
Voc	4.08	V
Isc	45.45	A
Vmpp	3.5	V
Impp	42	A
Power Output	152	Wp

## IV – Curve



## Temperature Coefficients

TkVoltage	-0.36%/K
TkCurrent	+0.07%/K
TkPower	-0.38%/K