

DANDELION

(EUQJH57J-420W | 2nd Gen.)

The new level of high efficiency lightweight module with U-IBC Cell**More** hotspot resistance

based on our new PEC technology

More contact reliability

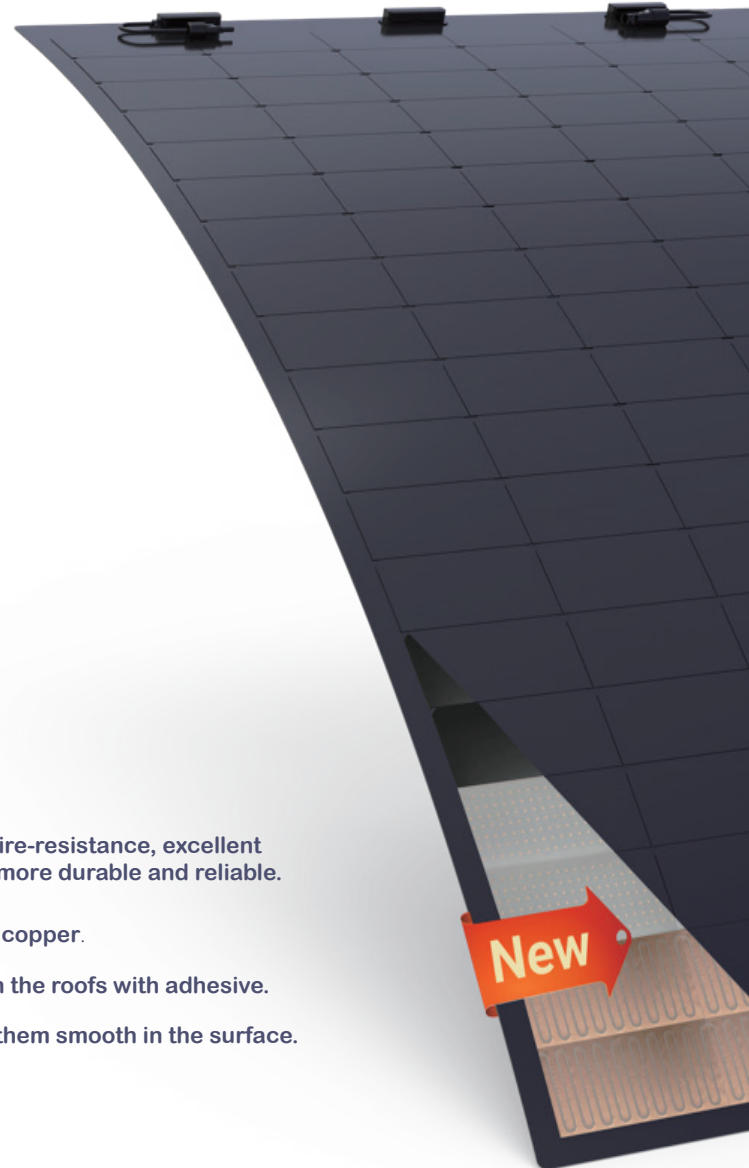
as there are no contact ribbons used

More moisture barrier

as the more layers form a vapor barrier

More efficiency

as the cell conversion is up to 26% and performance been optimized by lower temperature



Low weight (2.5 kg/m²), same power and our new U-IBC/PEC contact technology solves many of the challenges of actual lightweight modules.

- Higher reliability – as the lower degradation rate, superiority in fire-resistance, excellent performance in dynamic load (wind, snow, hail etc.) make them more durable and reliable.
- Higher performance – due to optimized heat transmission using copper.
- No roof penetration for installation – as they can be integrated in the roofs with adhesive.
- Aesthetic design – as there are no busbars, no ribbons, making them smooth in the surface.
- Customization at its best: available in multiple sizes and colors.



Product Warranty



Linear Performance Warranty

**Distributed by:**

Proxables BV
Boerkensleen 5
4705 RL Roosendaal

Tel: +31 (0)6 46 92 13 65
www.proxables.com - info@proxables.com

22.2%
MAX MODULE
EFFICIENCY

0~3%
POWER
TOLERANCE

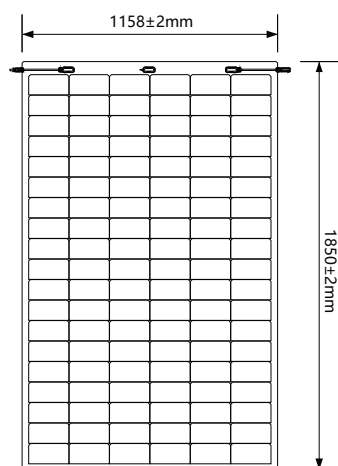
≤2%
FIRST YEAR
POWER DEGRADATION

0.55%
YEAR 2-25
POWER DEGRADATION

U-IBC HALF-CELL
Lower operating temperature

TYPICAL ELECTRICAL PARAMETERS

Model	EUQJH57J410		EUQJH57J415		EUQJH57J420		EUQJH57J425		EUQJH57J430	
Testing Condition	STC	NOCT	STC	NOCT	STC	NOCT	STC	NOCT	STC	NOCT
Rated Power (Pmpp) /W	410	309	415	313	420	317	425	320	430	324
Rated Current (Imp) /A	11.97	9.57	12.03	9.63	12.10	9.68	12.16	9.74	12.23	9.79
Rated Voltage (Vmpp) / V	34.31	32.30	34.53	32.50	34.74	32.71	34.96	32.91	35.17	33.11
Short Circuit Current (Isc) /A	12.80	10.47	12.88	10.53	12.95	10.60	13.03	10.66	13.10	10.72
Open Circuit Voltage (Voc) /V	40.96	38.97	41.18	39.18	41.39	39.39	41.61	39.59	41.82	39.80
Effective Module Efficiency(η) /%	21.17%		21.43%		21.69%		21.94%		22.20%	
STC (Standard Testing Conditions):Irradiance 1000W/m², Air Mass 1.5, Cell Temperature 25°C, Measuring Tolerance ±3%										
NOCT(Nominal Operating Cell Temperature): Irradiance 800W/m², Ambient Temperature 20°C, Air Mass 1.5, Wind speed 1m/s										



ABSOLUTE MAXIMUM RATING

Operating Temperature	From -40 to +85°C
Maximum Series Fuse Rating	25A
Safety Class	II
Fire Rating (IEC 61730)	C
Maximum System Voltage	DC 1500V

MECHANICAL CHARACTERISTICS

Cell Type	Mono-crystalline U-IBC 182mm×91.9mm, 114 (6×19)
Effective Module Dimension (L×W)	1763.6mm×1098.2mm
Dimension (L×W×H)	1850mm x 1158mm x 2mm (72.8x45.6x0.07 inches)
Weight	5.2±0.3kg
Cable	4mm² (IEC), 300mm or customized length
Junction Box	IP 68 with three bypass diodes
Connector	Original MC4

TEMPERATURE RATINGS

Voltage Temperature Coefficient	-0.220%/°C
Current Temperature Coefficient	+0.050%/°C
Power Temperature Coefficient	-0.240%/°C
Tolerance	0~+5W
NOCT	43 ± 2 °C

PACKING CONFIGURATION

40'HQ Container	Pallet/container	Piece/container
Pieces (126 pcs per pallet)	18	2268

